



CHAIN MESH BELT FLOW THROUGH BLASTERS



Model CB 1818

STANDARD FEATURES:

- This type of system offers the potential for reducing blaster operating and maintenance cost per cleaned part by 20 to 50% compared to batch-style blast cleaning
- Pass-through blasting should also reduce labor costs associated with cleaning by 50 to 90%
- Utilizes 4, 6, or 8 model VK PowerMax direct drive blast wheels for complete 360° part coverage
- Complete cast chrome/moly lining protects the cabinet from abrasive wear giving long life and low maintenance
- Manganese belt conveyance system with variable speed drive accommodates from 1 to 60 feet per minute blasting speeds
- A wide range of cabinet openings provide for blasting many smaller castings and forgings with a weight capacity of approximately 60 lbs.

When blast cleaning small or intricate parts that cannot withstand tumbling, a chain mesh belt system can process parts quickly with minimum trauma. Pass-through blast cleaning systems are also easily customized to suit specific product menus and space availability.



Model CB 1212

OPTIONAL FEATURES:

- Dust collection system
- Rotary scalp drum
- UL approved electrical panel
- Auxiliary abrasive hopper and low level sensor
- PLC Controls

CALL 1-800-835-1096



CHAIN MESH BELT FLOW THROUGH BLASTERS



SPECIFICATIONS:	CB 1212	CB 1818	CB 3624
Work Envelope	12" W x 12" H	18" W x 18" H	36" W x 24" H
Pass Height	37"	40"	48"
Variable Speed Manganese Belt	2-8 ft./min.	3-15 ft./min.	3-15 ft./min.
Lip Type Airwash Separator	20"	30"	48"
Machine Dimensions	12'L x 6'W x 12'H	13'L x 10'W x 16'H	14'L x 12'W x 18.5'H
Floor Space Required	24'L x 12'W x 12'H	26'L x 17'W x 16'H	28'L x 22'W x 18.5'H
Approx. Shipping Weight	8,000 lbs.	10,000 lbs.	12,000 lbs.

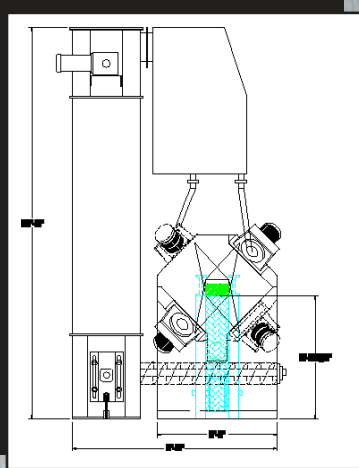
BLAST WHEELS:	CB 1212	CB 1818	CB 3624
Number of Wheels	4	4 or 6	4, 6 or 8
Horsepower	5 or 7.5 HP	10 to 40 HP	15 to 40 HP
Wheel Model Number	VC-9	VK PowerMax	VK PowerMax
Abrasive Required	2,000 lbs.	6,000 lbs.	9,000 lbs.

FEATURES:	CB 1212	CB 1818	CB 3624
Manganese Cabinet	Standard	Standard	Standard
Parts Presence Sensor	Optional	Standard	Standard
Cast Chromo/Moly Liner	Optional	Standard	Standard



VK PowerMax Blast Wheel

Custom CB 2406 Shown Below



It is in the customization of our basic designs to your parts specific needs that truly sets Viking apart from the competition. With an accomplished and proven design staff, Viking can build equipment from the ground up or simply modify existing models to tailor fit your cleaning application. At Viking we do not simply match your part to the closest machine size that will work. We match our blast equipment to your part, to provide the most efficient and economical cleaning solution possible.

VIKING BLAST AND WASH SYSTEMS RESERVES THE RIGHT TO CHANGE ITS PRODUCTS OR SPECIFICATIONS AT ANY TIME WITHOUT NOTICE OR OBLIGATION.

All machines are equipped with guards and safety devices to comply with State and Trade Regulations for the protection of operators. All electrical wiring is designed to conform with the protection of operators. Viking Blast and Wash Systems, or any of its divisions will not assume responsibility in cases of failure by the operator to exercise reasonable care when using the equipment.

VIKING OFFERS A FULL LINE OF AIRLESS SHOT BLAST & PARTS WASH EQUIPMENT



Basket Blasters



Chainbelt Pass-Thru Washers



Tumble Blasters



Parts Washers



Spinner Hangers



Monorail Pass-Thru Washers



VIKING BLAST & WASH SYSTEMS
 731 S. Industrial CT, Rose Hill, KS 67133
 Phone: 316-634-6699 Fax: 316-634-6658
 Toll Free: 800-835-1096
 Email: sales@vikingcorporation.com
 Web: www.vikingcorporation.com